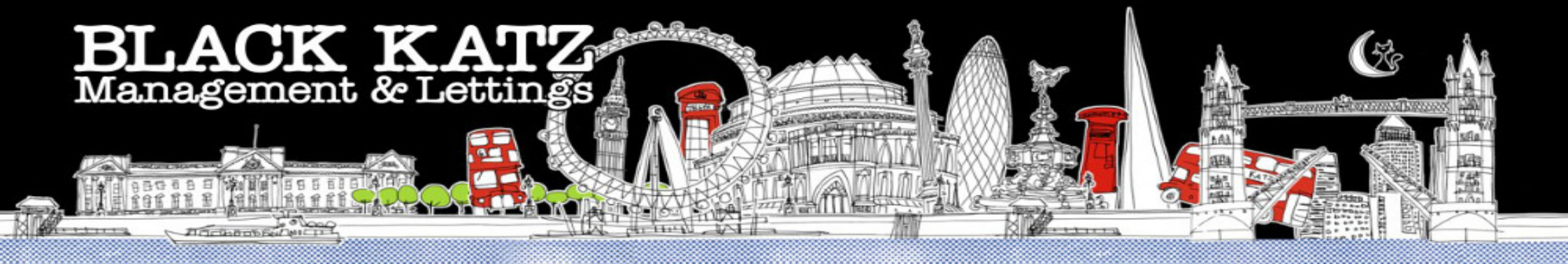


BLACK KATZ

Management & Lettings



1 Bedroom Flat To Rent In Crouch End £ 355 p/w (£1538 pcm)

1 Bedroom Flat To Rent In Crouch End£ 355 p/w (£1538 pcm)

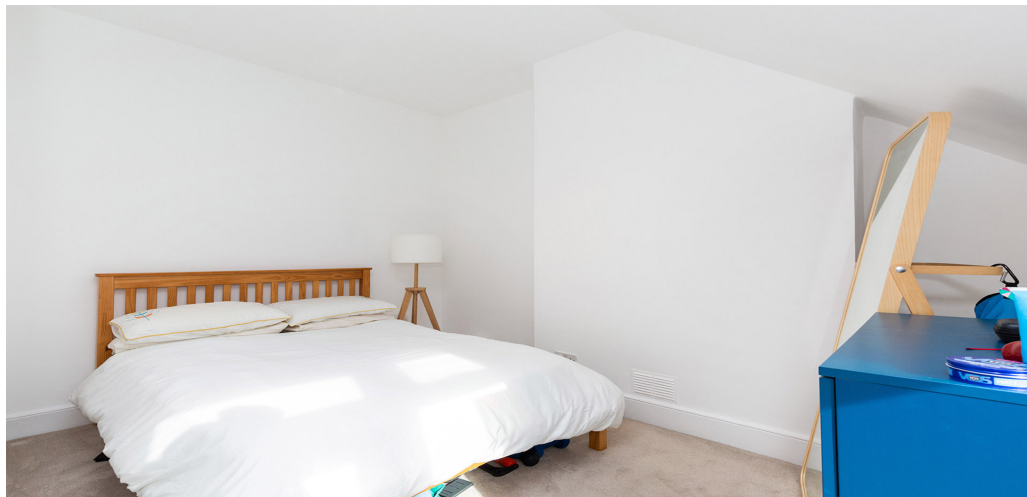
A fantastic split level one bedroom flat set within a beautiful period house located right next to Priory park and walking distance to Crouch end Broadway. This flat benefits from a modern separate kitchen, tiled bathroom, large lounge, a spacious double bedroom with access to a private south facing roof terrace.

Located on one of Crouch ends premier roads the property offers easy access to an abundance of boutique shops, cafes, supermarket and restaurants on the Crouch End Broadway, also offering access to the lush green space of Priory Park.

E.P.C. RATING: D

Property Features

- . Beautiful tree lined street . Carpets throughout . Washing Machine . Fitted Kitchen . Separate kitchen . Close to local amenities . Fantastic Transport Links . Zone 2 . Zone 3
- . 5 weeks deposit . Tiled bathroom . Arranged over two floors . Period Conversion . Victorian conversion . Gas Central Heating . Central Heating . Excellent decorative order
- . Spacious Living Room



1 Bedroom Flat To Rent In Crouch End£ 355 p/w (£1538 pcm)



**22 Baron Street
London
N1 9ES**

**Manager:Raj Manandhar
Email:raj@blackkatz.com
Tel:020 7 713 7337**

**Admin:Alisha Kaur Sangha
Email:Alisha@blackkatz.com**

**Office Hours:
Mon-Fri 9.00am-7.00pm
Sat-10am-2.00pm
(Please call beforehand)**

We aim to make our particulars both accurate and reliable. However they are not guaranteed, nor do they form part of an offer or contract. If you require clarification on any points then please contact us. Please note that appliances and heating systems have not been tested and therefore no warranties can be given as to their good working order.