

# BLACK KATZ

Management & Lettings



**1 Bedroom Flat To Rent In WILLEDEN GREEN £462pw (£2000 pcm)**

## **1 Bedroom Flat To Rent In WILLESDEN GREEN£ 462pw (£2000 pcm)**

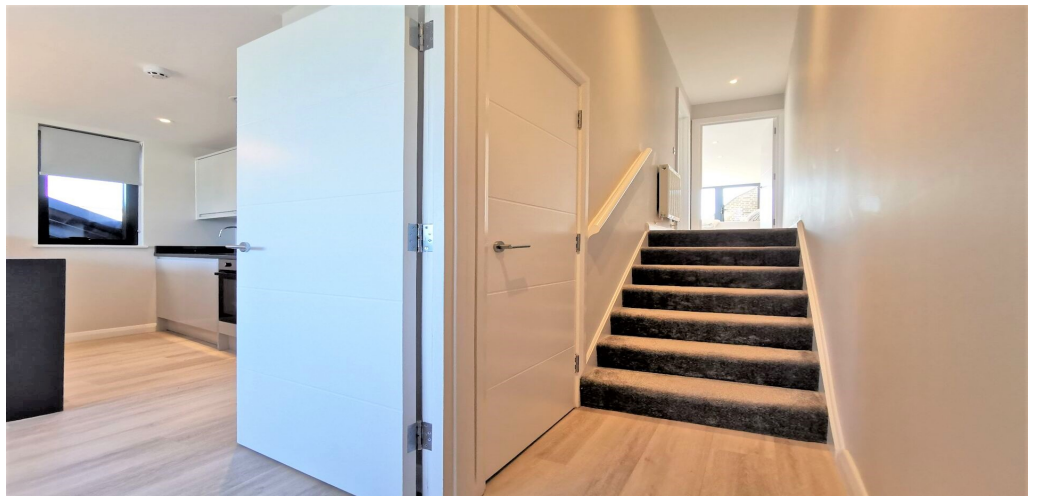
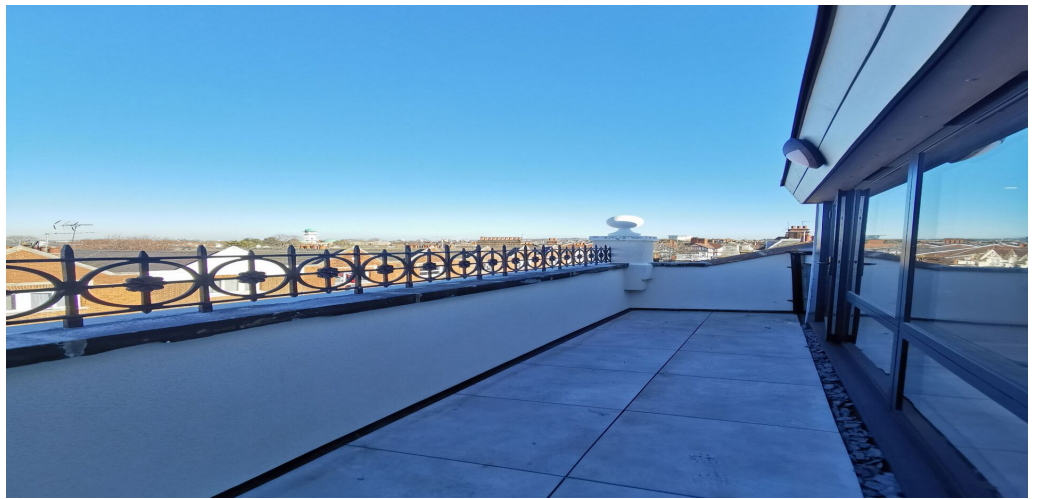
**<p>\*\* LUXURY PENTHOUSE\*\*** Black Katz are proud to present an&nbsp;amazing one bedroom flat in the centre of Willesden Green with a private roof&nbsp;terrace. The property offers a generous size reception room, modern kitchen, fully tiled bathroom and double bedroom. Additionally there are two large private roof terraces.&nbsp;Located seconds away from Willesden Green Underground and all local amenities. Please contact our office to arrange a viewing.&nbsp;</p>

**E.P.C. RATING: D**

### **Property Features**

**. Fitted Kitchen . Close to local amenities . Close to Tube . Fantastic Transport Links . Tiled bathroom . Double Glazed**





## 1 Bedroom Flat To Rent In WILLESDEN GREEN £462pw (£2000 pcm)



**22 West Hampstead  
Mews  
West Hampstead  
London  
NW6 3BB**

**Manager: Jamie Black  
Email: [jamie@blackkatz.com](mailto:jamie@blackkatz.com)  
Tel: 020 7328 5000**

**Admin: Erika Szabo  
Email: [Erika@blackkatz.com](mailto:Erika@blackkatz.com)**

**Office Hours:  
Mon-Fri 9.00am-7.00pm  
Sat-10am-2.00pm  
(Please call beforehand)**

We aim to make our particulars both accurate and reliable. However they are not guaranteed, nor do they form part of an offer or contract. If you require clarification on any points then please contact us. Please note that appliances and heating systems have not been tested and therefore no warranties can be given as to their good working order.