

BLACK KATZ

Management & Lettings



2 Bedroom Apartment Rent In Borough/London Bridge £ 600 p.w. (Includes Water Rates). (£2600 pcm)

2 Bedroom Apartment Rent In Borough/London Bridge£ 600 p.w. (Includes Water Rates). (£2600 pcm)

-- Available 12th August--

Black Katz London Bridge Office are please to offer to the market this superbly located two bedroomed, two bathroomed apartment within Kittiwake Court on Great Dover Street.

Extending to over 785sq.ft this beautiful apartment comprises of a large open plan kitchen/reception room with two south facing windows flooding this apartment with loads of natural light.Two stylish bathrooms (one en-suite), two double bedrooms and with wooden floors throughout and good storage.This property also includes water rates and gated parking space. This contemporary apartment lies close to Borough Market, London Bridge and the River.

For transport Borough tube station is minutes away and London Bridge Tube and Train station can be reached in approximately 5 minutes.

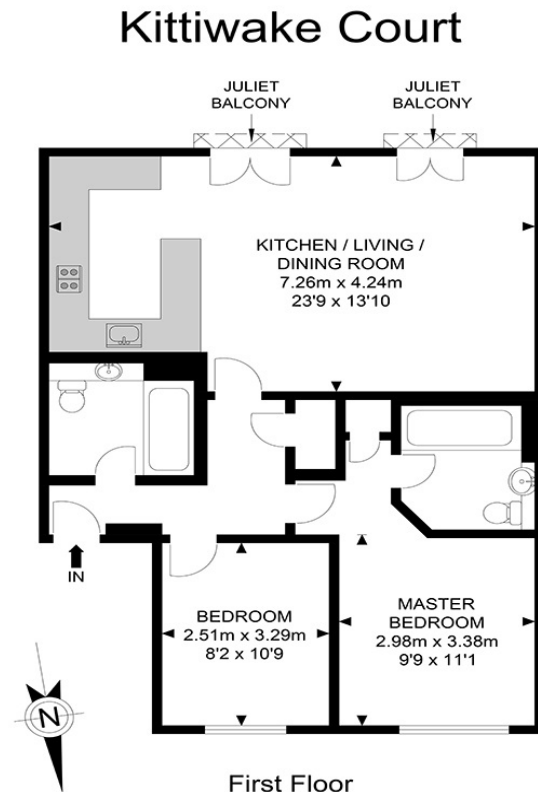
E.P.C. RATING: C

Property Features

. Communal roof terrace . Wood Floors . Dishwasher . Fitted Kitchen . Close to local amenities . Close to Tube . Fantastic Transport Links . Zone 1 . 5 weeks deposit . Including water rates . Two Bathrooms . Open plan . Private Development . Double Glazed . Excellent decorative order . Spacious Living Room



**2 Bedroom Apartment Rent In Borough/London Bridge £ 600 p.w. (Includes Water Rates).
(£2600 pcm)**



APPROX. GROSS INTERNAL FLOOR AREA 741.42 SQ FT / 68.88 SQM

Whilst every attempt has been made to ensure the accuracy of the floor plan contained here, measurements of doors, windows, rooms and any other items are approximate and no responsibility is taken for any error, omission or mis-statement. This plan is for illustrative purposes only and should be used as such by any prospective purchaser. The service, system and appliances shown have not been tested and no guarantee as to their operability or efficiency can be given.

© SpacePhoto
Photography and Floor Plan

2 Bedroom Apartment Rent In Borough/London Bridge£ 600 p.w. (Includes Water Rates).



**78 Borough High Street
London Bridge
SE1 1LL**

**Manager: Alex Nunzi
Email: south@blackkatz.com
Tel: 020 7403 5010**

**Admin: Amy Burbridge
Email: amy.burbridge@blackkatz.com
m**

**Office Hours:
Mon-Fri 9.00am-7.00pm
Sat-10am-2.00pm
(Please call beforehand)**

We aim to make our particulars both accurate and reliable. However they are not guaranteed, nor do they form part of an offer or contract. If you require clarification on any points then please contact us. Please note that appliances and heating systems have not been tested and therefore no warranties can be given as to their good working order.