

BLACK KATZ
Management & Lettings



2 Bedroom Apartment To Rent In Finsbury Park £440pw (£1907 pcm)

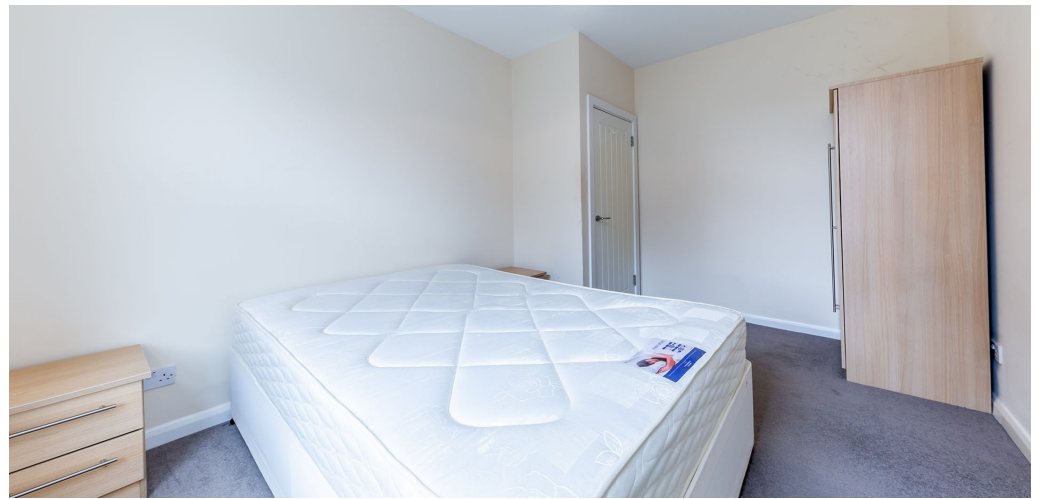
2 Bedroom Apartment To Rent In Finsbury Park£ 440pw (£1907 pcm)

<p>Available 10/07/2024</p><p>Black Katz are pleased to offer this well presented two double bedroom property set within a period conversion on Moray Road. The property comprises of an open plan kitchen lounge, two spacious bedrooms, fitted kitchen with space for dining, mix of wood floors and carpets, a modern bathroom and neutral decor giving the apartment a bright and airy feel.</p><p>The local area offers an excellent selection of amenities as the shops, bars and restaurants of Crouch End, Stroud Green and Finsbury Park are within close proximity. Nearby public transport links include Finsbury Park Station (London Underground Piccadilly Line, Victoria Line and National Rail services).</p>

E.P.C. RATING: C

Property Features

. Beautiful tree lined street . Combination of wooden floors and carpets . Washing Machine . Fitted Kitchen . Zone 2 . 5 weeks deposit . Tiled bathroom . Open plan . Period Conversion . Victorian conversion . Gas Central Heating . Central Heating . Excellent decorative order . Good decorative order . Spacious Living Room . Juliette Balcony



2 Bedroom Apartment To Rent In Finsbury Park £ 440pw (£1907 pcm)



22 Baron Street
London
N1 9ES

Manager: Raj Manandhar
Email: raj@blackkatz.com
Tel: 020 7713 7337

Admin: Alisha Kaur Sangha
Email: Alisha@blackkatz.com

Office Hours:
Mon-Fri 9.00am-7.00pm
Sat-10am-2.00pm
(Please call beforehand)

We aim to make our particulars both accurate and reliable. However they are not guaranteed, nor do they form part of an offer or contract. If you require clarification on any points then please contact us. Please note that appliances and heating systems have not been tested and therefore no warranties can be given as to their good working order.