

# BLACK KATZ

Management & Lettings



**2 Bedroom Apartment To Rent In London Bridge SE1 £465 p.w. (£2015 pcm)**

## **2 Bedroom Apartment To Rent In London Bridge SE1£ 465 p.w. (£2015 pcm)**

**<p>--Available 30th May--</p><p>Located by the banks of the River Thames, this beautiful warehouse apartment boasts two large double bedrooms and is finished to a very high standard, with contemporary fittings and fixtures, wooden floors throughout, white walls, floor to ceiling windows, two luxury fully tiled bathrooms ( One En-Suite) and a larger than average open plan reception room. Situated on the second floor of this highly desirable private development.</p><p>Flooded with natural light and located in one of the most desirable areas of London Bridge. &quot;Shad Thames&quot; has an array of restaurants, bars and designer shops. London Bridge Station ( Northern Line, Jubilee line and over ground ) is just moments away as is Bermondsey Station (Jubilee line).</p>**

**E.P.C. RATING: C**

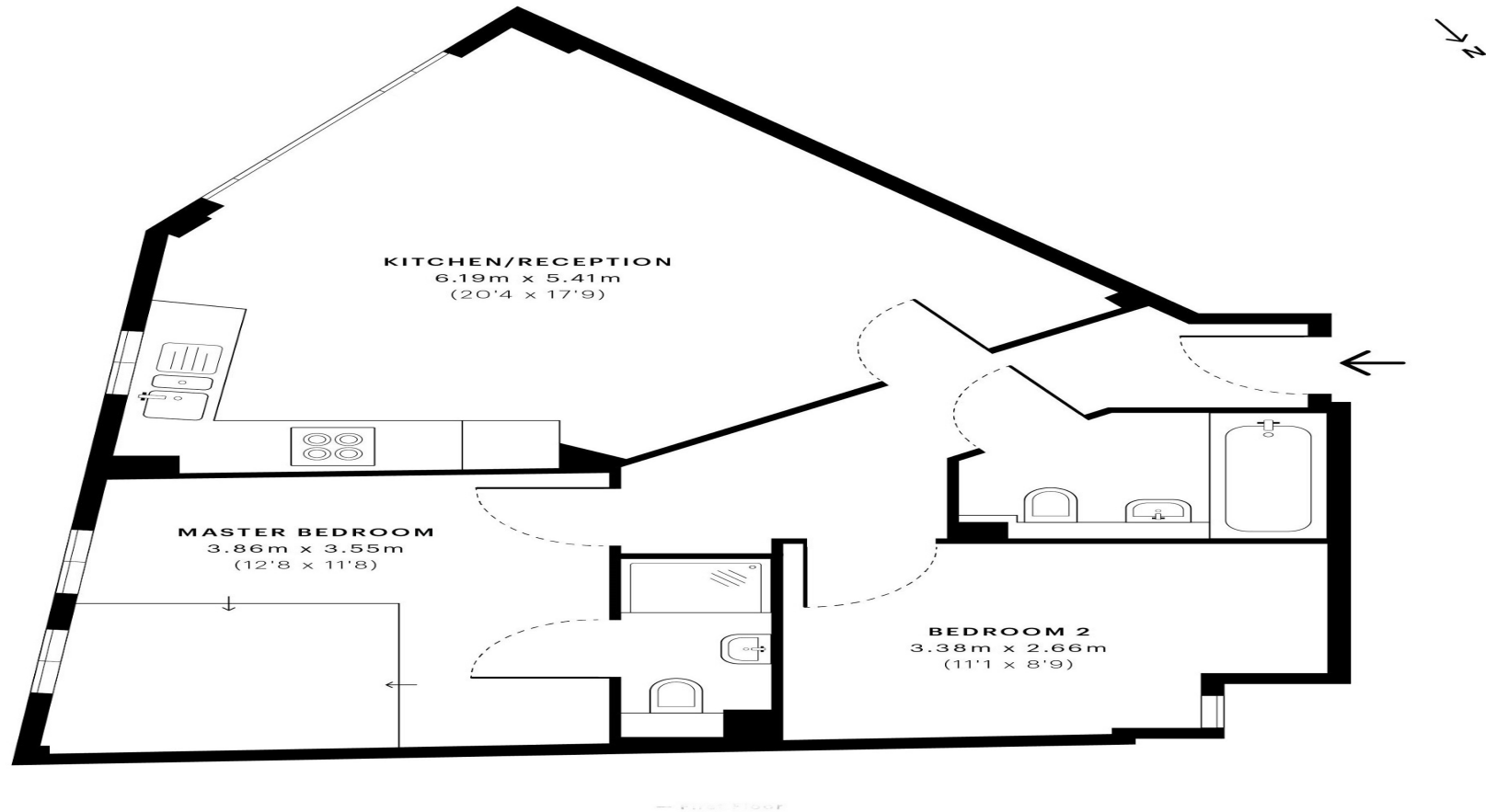
### **Property Features**

**. Wood Floors . Washing Machine . Dishwasher . Close to local amenities . Close to Tube . Fantastic Transport Links . Zone 1 . 5 weeks deposit . Two Bathrooms . En suite bathroom . Open plan . Private Development . South Facing . Warehouse conversion . Double Glazed . Excellent decorative order . Spacious Living Room . Floor to ceiling windows**





# 2 Bedroom Apartment To Rent In London Bridge SE1£ 465 p.w. (£2015 pcm)





## 2 Bedroom Apartment To Rent In London Bridge SE1£ 465 p.w. (£2015 pcm)



**Black Katz**  
**78 Borough High Street**  
**London Bridge**  
**SE1 1LL**

**Manager: Alex Nunzi**  
**Email: alex@blackkatz.com**  
**Tel: 020 7403 5010**

**Admin: Amy Burbridge**  
**Email: amy.burbridge@blackkatz.com**

**Office Hours:**  
**Mon-Fri 9.00am-7.00pm**  
**Sat-10am-2.00pm**  
**(Please call beforehand)**

We aim to make our particulars both accurate and reliable. However they are not guaranteed, nor do they form part of an offer or contract. If you require clarification on any points then please contact us. Please note that appliances and heating systems have not been tested and therefore no warranties can be given as to their good working order.