

BLACK KATZ

Management & Lettings



2 Bedroom Apartment Rent In London Bridge £ 625 p.w. (£2709 pcm)

2 Bedroom Apartment Rent In London Bridge£ 625 p.w. (£2709 pcm)

<p>-- Available 10th of October -- </p><p>Set on the third floor, this very well presented dual aspect two bedroomed two bathroomed apartment is located within this beautiful secure private development on the ever trendy Bermondsey Street and within easy walking distance of London Bridge and Borough Market. Boasting approximately 800 sq.ft of living and entertaining space this beautiful property is flooded with natural light, offering spacious double bedrooms with fitted wardrobes, high specification fully fitted kitchen, large living and dining area, two contemporary modern bathrooms (One en-suite) and private balcony. Located only minutes away from London Bridge Station (Northern Line, Jubilee Line and overground).</p>

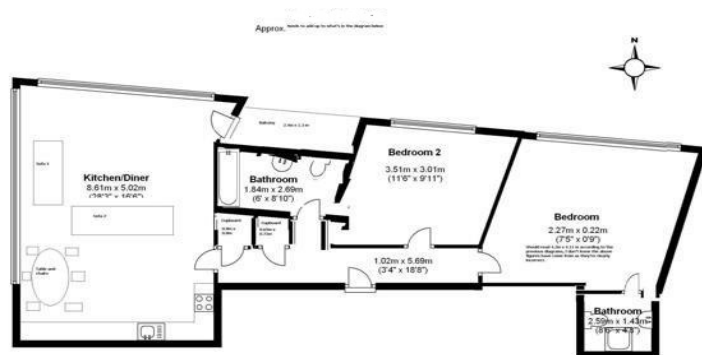
E.P.C. RATING: C

Property Features

. Dishwasher . Close to local amenities . Close to Tube . Fantastic Transport Links . Zone 1 . 5 weeks deposit . Two Bathrooms . En suite bathroom . Walk in shower . Open plan . Private Development . Double Glazed . Excellent decorative order . Floor to ceiling windows

Place of Interest Locally

London Bridge Underground Station - 0.19 miles. Tower Hill Underground Station - 0.63 miles. Cannon Street station - 0.64 miles. Fenchurch Street Station - 0.67 miles. Tower Gateway DLR Station - 0.71 miles. Bank Station - 0.75 miles. Liverpool Street Station - 1.12 miles. Waterloo Station - 1.16 miles. Old Street Station - 1.59 miles. Charing Cross Station - 1.74 miles. Covent Garden Underground Station - 1.81 miles. St. James's Park London Underground Station - 2.09 miles. Gatwick Express - 2.55 miles. Eurostar Train Station - St Pancras - 2.56 miles. Victoria Station - 2.57 miles.



Total area: approx.
FLOOR PLAN FOR ILLUSTRATIVE PURPOSES ONLY AND NO MEASUREMENT IS TO SCALE.

Whilst every attempt has been made to ensure the accuracy of this floor plan, all measurements, walls, doors, windows, fixtures, fittings and positioning shown are an approximate interpretation for illustrative purposes and should be used for guidance as to the arrangement of the accommodation only. This floor plan is not a statement of fact and any intending purchasers or person who want to use and/or rely upon it must satisfy themselves as to the accuracy by physical inspection or otherwise. All measurements are approximate and plans are not to scale nor accurate in detail. No responsibility is taken for or liability can be incurred for any error, omission, mis-statement or use of data shown. ERS and its employees, agents or otherwise make no representation or warranty in respect of the property and/or the floor plan. The above statement applies to both Energy Reports and Surveys Limited and the Agent marketing this property. Unauthorised reproduction is strictly prohibited.
Plan produced using The Mobile Agent.

2 Bedroom Apartment Rent In London Bridge £ 625 p.w. (£2709 pcm)



Black Katz
78 Borough High Street
London Bridge
SE1 1LL

Manager: Alex Nunzi
Email: alex@blackkatz.com
Tel: 020 7403 5010

Admin: Patricia Couto
Email: patricia@blackkatz.com

Office Hours:
Mon-Fri 9.00am-7.00pm
Sat-10am-2.00pm
(Please call beforehand)

We aim to make our particulars both accurate and reliable. However they are not guaranteed, nor do they form part of an offer or contract. If you require clarification on any points then please contact us. Please note that appliances and heating systems have not been tested and therefore no warranties can be given as to their good working order.