

BLACK KATZ

Management & Lettings



2 Bedroom Apartment To Rent In Walthamstow £450pw (£1950 pcm)

2 Bedroom Apartment To Rent In Walthamstow £ 450pw (£1950 pcm)

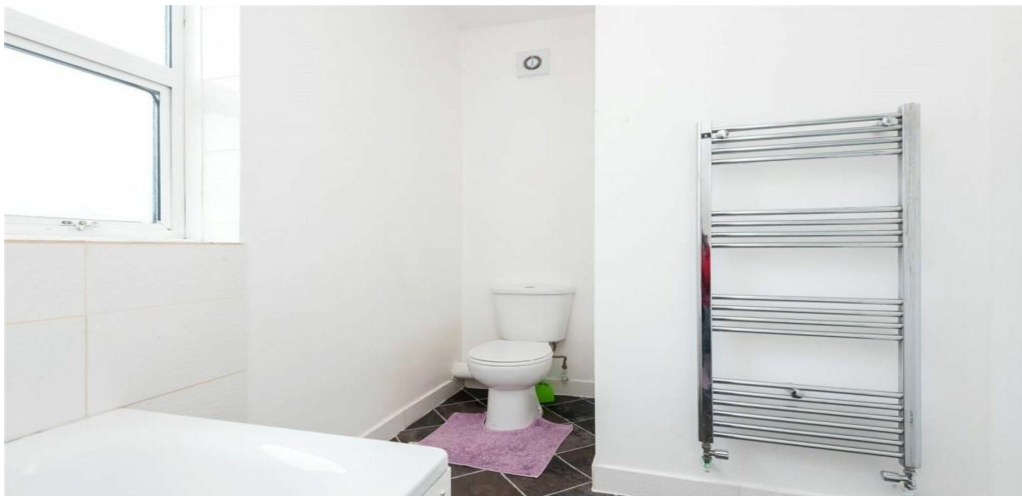
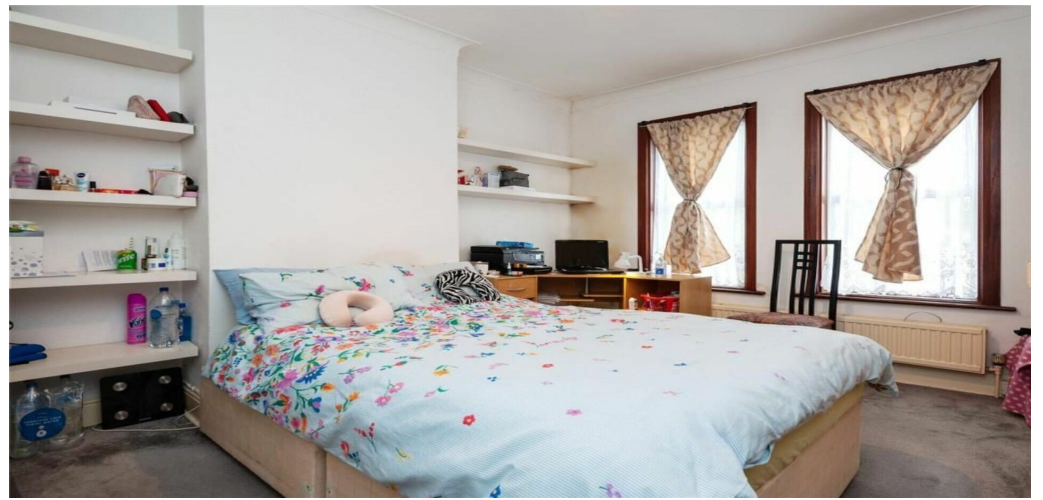
**<p>We pleased to offer this stunning first floor two bedroom flat just off the popular Blackhorse Road. The property benefits from a fully fitted kitchen, large bathroom, gas central heating, a doubles and a single, carpets throughout and access to a garden shared with one other property.</p><p>The property is ideal for a couple, two sharers who would like a home office or a small Family.

Conveniently located and walking distance of three major rail links, Blackhorse Road, Walthamstow Queens Road and Walthamstow Central station for access to the Victoria line and overground.</p>**

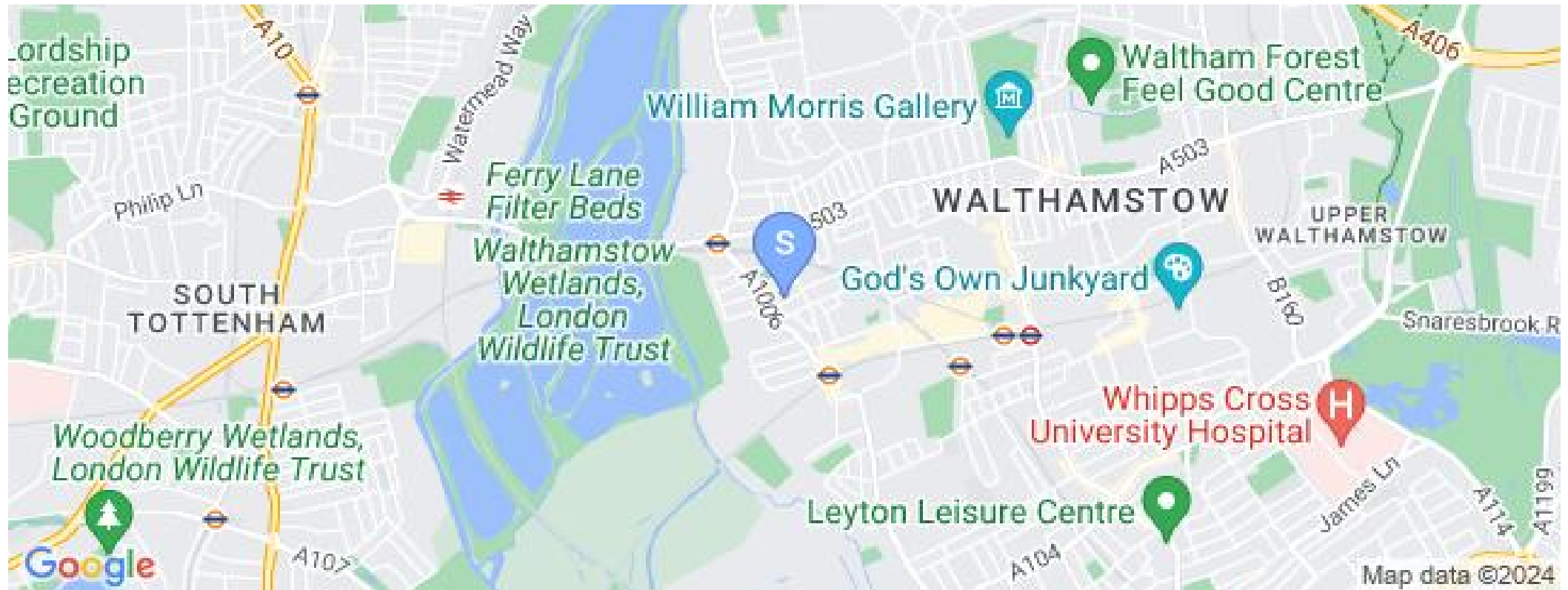
E.P.C. RATING: D

Property Features

. Garden . Communal Gardens . Carpets throughout . Washing Machine . Fitted Kitchen . Separate kitchen . Close to local amenities . Fantastic Transport Links . Zone 2 . Zone 3 . 5 weeks deposit . Tiled bathroom . Double Height Ceilings . Period Conversion . Managed By Black Katz . Gas Central Heating . Double Glazed . Kitchen Diner



2 Bedroom Apartment To Rent In Walthamstow £ 450pw (£1950 pcm)



22 Baron Street
London
N1 9ES

Manager: Raj Manandhar
Email: Raj@blackkatz.com
Tel: 0207 713 7337

Admin: Alisha Kaur Sangha
Email: Alisha@blackkatz.com

Office Hours:
Mon-Fri 9.00am-7.00pm
Sat-10am-2.00pm
(Please call beforehand)

We aim to make our particulars both accurate and reliable. However they are not guaranteed, nor do they form part of an offer or contract. If you require clarification on any points then please contact us. Please note that appliances and heating systems have not been tested and therefore no warranties can be given as to their good working order.