

# BLACK KATZ

Management & Lettings



**2 Bedroom Apartment To Rent In West Hampstead £462pw (£2000 pcm)**

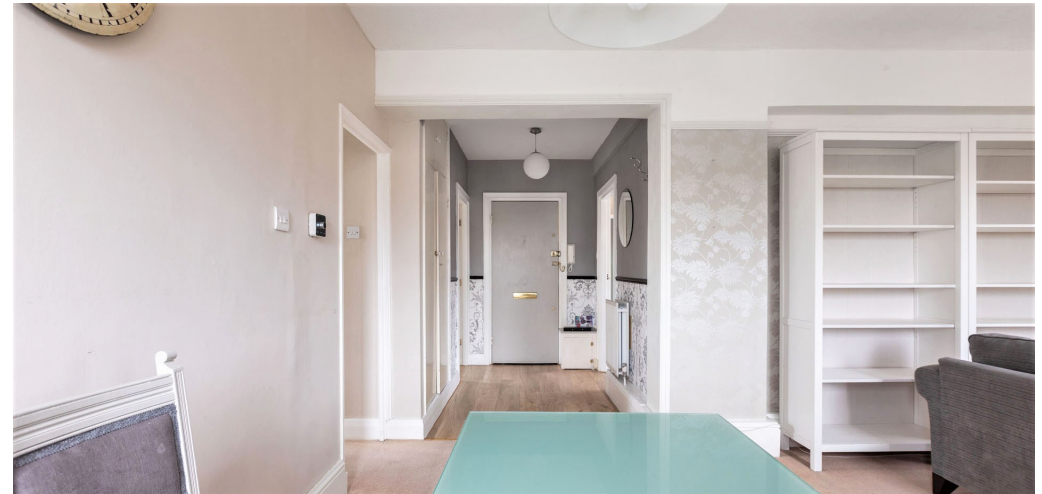
## **2 Bedroom Apartment To Rent In West Hampstead£ 462pw (£2000 pcm)**

**<p>Available from March. This is an excellent two bedroom apartment located in a lovely period mansion block in the heart of West Hampstead. The property is flooded with natural light and offers a&nbsp;large reception room, two generous size double bedrooms, modern fully fitted kitchen and tiled bathroom with bath and shower. West Hampstead has fantastic transport links with the Jubilee Line, Overground and Thameslink. You are also a short walk to Finchley Road. Please contact our office for more information.</p>**

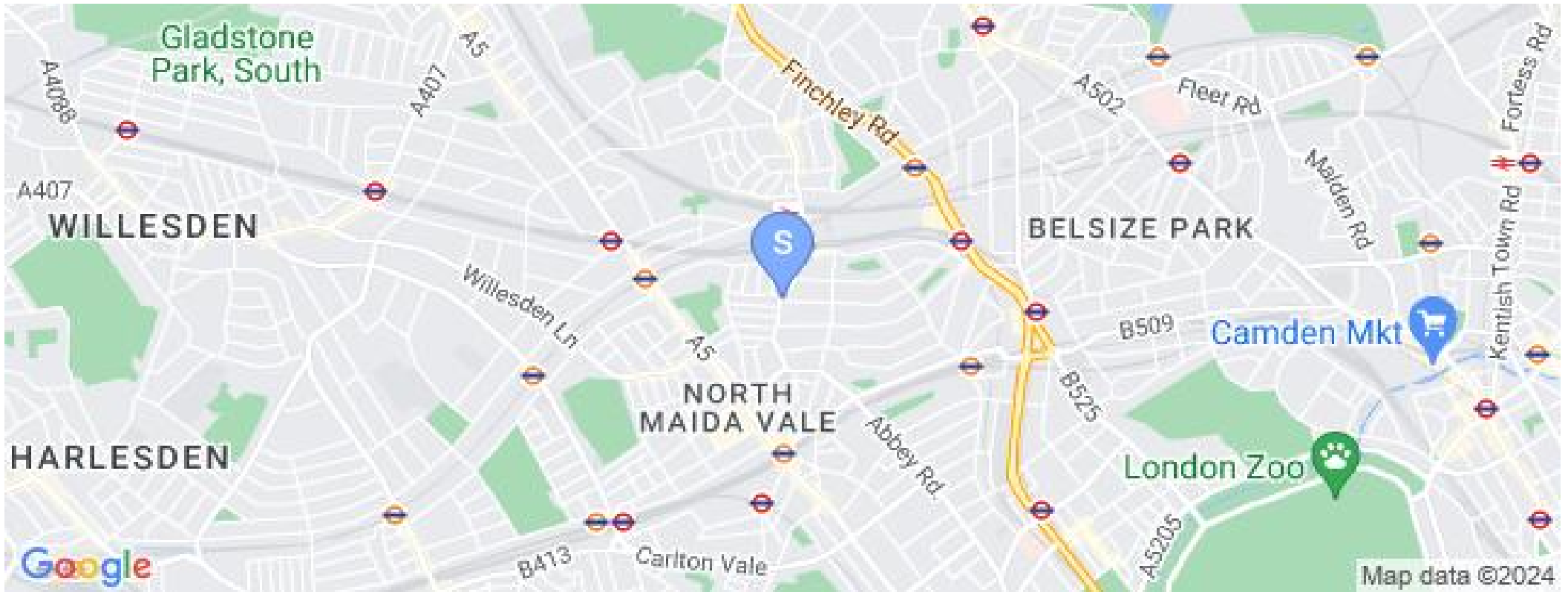
**E.P.C. RATING: D**

### **Property Features**

**. Beautiful tree lined street . Separate kitchen . Close to local amenities . Close to Tube . Fantastic Transport Links . Tiled bathroom . Private mansion block . Good decorative order . Spacious Living Room**



## 2 Bedroom Apartment To Rent In West Hampstead £ 462pw (£2000 pcm)



**22 West Hampstead  
Mews  
West Hampstead  
London  
NW6 3BB**

**Manager: Jamie Black  
Email: [jamie@blackkatz.com](mailto:jamie@blackkatz.com)  
Tel: 020 7328 5000**

**Admin: Erika Szabo  
Email: [Erika@blackkatz.com](mailto:Erika@blackkatz.com)**

**Office Hours:  
Mon-Fri 9.00am-7.00pm  
Sat-10am-2.00pm  
(Please call beforehand)**

We aim to make our particulars both accurate and reliable. However they are not guaranteed, nor do they form part of an offer or contract. If you require clarification on any points then please contact us. Please note that appliances and heating systems have not been tested and therefore no warranties can be given as to their good working order.