

# BLACK KATZ

Management & Lettings



**2 Bedroom Flat To Rent In Crouch End £425 p/w (£1842 pcm)**



## 2 Bedroom Flat To Rent In Crouch End£ 425 p/w (£1842 pcm)

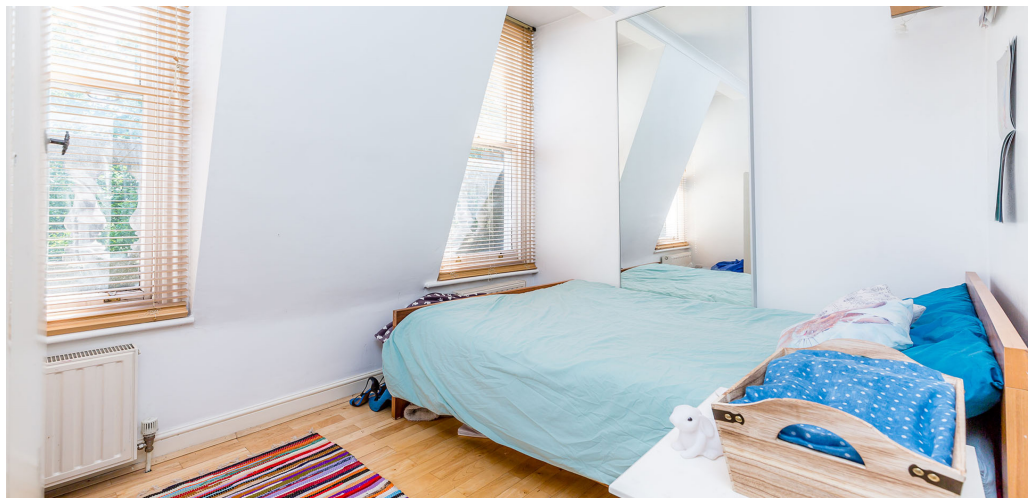
A spacious two double bedroom property set in an old converted bank by Hornsey Train Station. The property offers wood floors throughout, tiled bathroom, a fitted kitchen through an arch off the lounge and has lovely views over London.

The property is a stone throw away from Hornsey Overground Train Station that gives you access into Moorgate Station with in 20 mins, it is also a short walk to Turnpike Lane (Piccadilly Line) and has good bus routes. Wood Green shopping centre is also a short distance away, with Crouch End with its coffee shops and boutiques around the corner.

E.P.C. RATING: D

### Property Features

. Wood Floors . Washing Machine . Dishwasher . Luxury Appliances . Fitted Kitchen . Close to local amenities . Close to Tube . Fantastic Transport Links . Zone 2 . 5 weeks deposit . Open plan . Period Conversion . Georgian conversion . Gas Central Heating . Recently Decorated . Excellent decorative order . Spacious Living Room . Fireplace



## 2 Bedroom Flat To Rent In Crouch End£ 425 p/w (£1842 pcm)



**22 Baron Street  
London  
N1 9ES**

**Manager:Raj Manandhar  
Email:raj@blackkatz.com  
Tel:020 7 713 7337**

**Admin:Alisha Kaur Sangha  
Email:Alisha@blackkatz.com**

**Office Hours:  
Mon-Fri 9.00am-7.00pm  
Sat-10am-2.00pm  
(Please call beforehand)**

We aim to make our particulars both accurate and reliable. However they are not guaranteed, nor do they form part of an offer or contract. If you require clarification on any points then please contact us. Please note that appliances and heating systems have not been tested and therefore no warranties can be given as to their good working order.