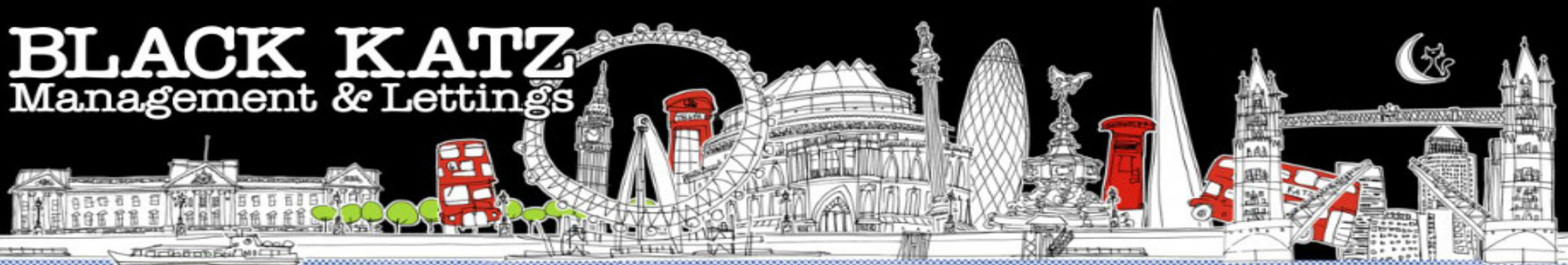


**BLACK KATZ**  
Management & Lettings



**2 Bedroom Flat To Rent In Marylebone £500pw (£2166 pcm)**

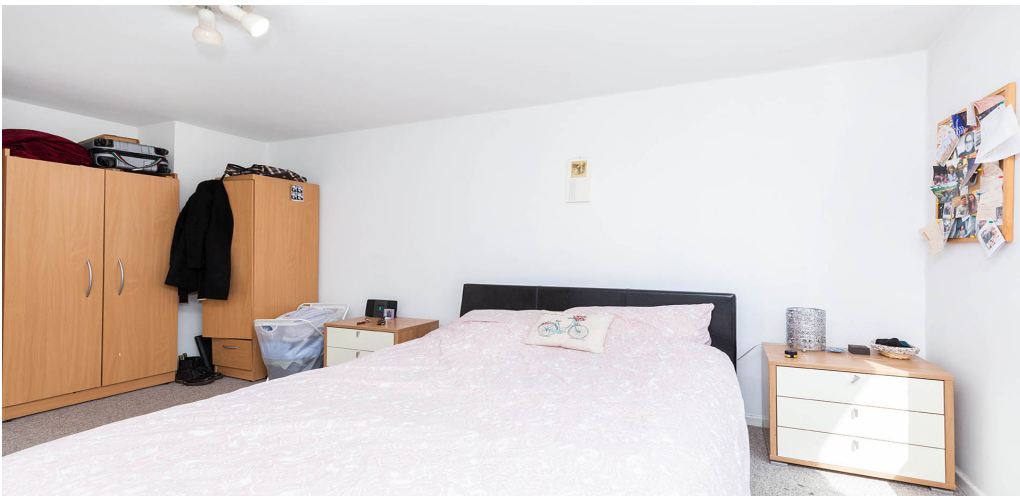
## **2 Bedroom Flat To Rent In Marylebone£ 500pw (£2166 pcm)**

**<p>Fantastic newly decorated two double bedroom flat positioned in the heart of Marylebone. Located within walking distance to local shops and tube the property has a open plan kitchen/lounge, modern bathroom, plenty of storage and loads of natural light. Boldero Place is conveniently located for easy access to Marylebone Station as well as the A40 for motorists and within a short walk to the open spaces of Regents Park.</p>**

**E.P.C. RATING: C**

### **Property Features**

**. Washing Machine . Fitted Kitchen . Close to local amenities . Close to Tube . Fantastic Transport Links . Zone 1 . Tiled bathroom . Open plan . Central Heating . Excellent decorative order**



## 2 Bedroom Flat To Rent In Marylebone £ 500pw (£2166 pcm)



**69 Parkway  
Camden Town  
London  
NW1 7PP**

**Manager: Dani Anwar  
Email: [dani@blackkatz.com](mailto:dani@blackkatz.com)  
Tel: 020 7284 3111**

**Admin: Lauren Dean  
Email: [lauren@blackkatz.com](mailto:lauren@blackkatz.com)**

**Office Hours:  
Mon-Fri 9.00am-7.00pm  
Sat-10am-2.00pm  
(Please call beforehand)**

We aim to make our particulars both accurate and reliable. However they are not guaranteed, nor do they form part of an offer or contract. If you require clarification on any points then please contact us. Please note that appliances and heating systems have not been tested and therefore no warranties can be given as to their good working order.