

# BLACK KATZ

Management & Lettings



**2 Bedroom Flat To Rent In Queens Park £450pw (£1950 pcm)**

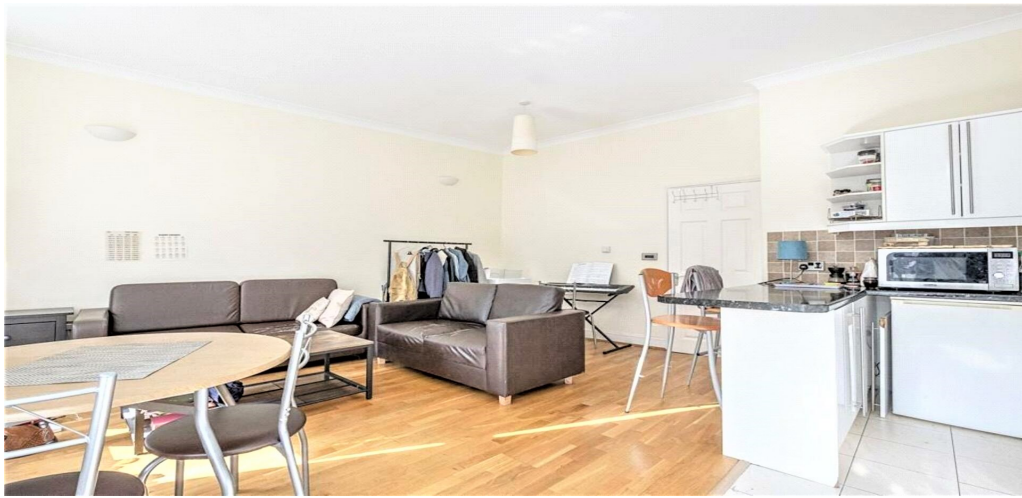
## **2 Bedroom Flat To Rent In Queens Park£ 450pw (£1950 pcm)**

**<p>Available from June. This stunning two bedroom apartment is set on the first floor of a period house conversion and boasts wood floors and neutral decor throughout. The open plan kitchen/living room is a fantastic entertainment space, with modern, white gloss cabinets and stone worktop. Additionally, the property is double glazed throughout. Please contact our office for more information</p>**

**E.P.C. RATING: C**

### **Property Features**

**. Wood Floors . Washing Machine . Fitted Kitchen . Zone 2 . Tiled bathroom . Open plan . Period Conversion . Gas Central Heating . Double Glazed . Recently Decorated**



## 2 Bedroom Flat To Rent In Queens Park £ 450pw (£1950 pcm)



**22 West Hampstead  
Mews  
West Hampstead  
London  
NW6 3BB**

**Manager: Jamie Black  
Email: [jamie@blackkatz.com](mailto:jamie@blackkatz.com)  
Tel: 020 7328 5000**

**Admin: Erika Szabo  
Email: [Erika@blackkatz.com](mailto:Erika@blackkatz.com)**

**Office Hours:  
Mon-Fri 9.00am-7.00pm  
Sat-10am-2.00pm  
(Please call beforehand)**

We aim to make our particulars both accurate and reliable. However they are not guaranteed, nor do they form part of an offer or contract. If you require clarification on any points then please contact us. Please note that appliances and heating systems have not been tested and therefore no warranties can be given as to their good working order.