

BLACK KATZ

Management & Lettings



2 Bedroom Flat To Rent In Willesden Green £403pw (£1750 pcm)

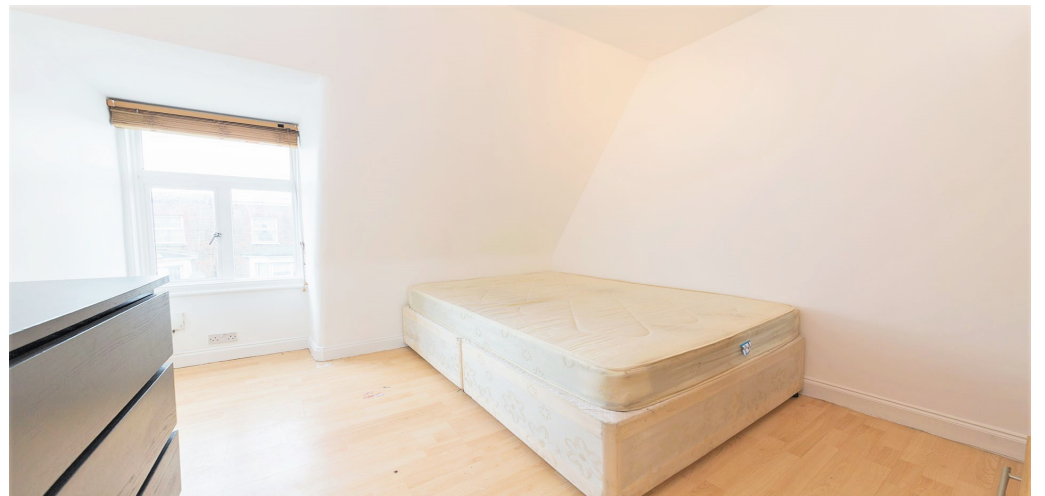
2 Bedroom Flat To Rent In Willesden Green£ 403pw (£1750 pcm)

<p>*** RECENTLY REDECORATED ***** We are proud to offer this recently redecorated two double bedroom apartment located short walk away from Willesden Green and Dollis Hill stations (both jubilee Line). The property is set on the top floor and benefits from bright open plan reception room with fully fitted kitchen, two equal size double bedrooms and modern bathroom. All local amenities and public transport are on your doorstep.</p>**

E.P.C. RATING: D

Property Features

. Laminate Flooring . Fitted Kitchen . Close to local amenities . Close to Tube . Fantastic Transport Links . Zone 2 . Open plan . Period Conversion . Central Heating



2 Bedroom Flat To Rent In Willesden Green £ 403pw (£1750 pcm)



**22 West Hampstead
Mews
West Hampstead
London
NW6 3BB**

**Manager: Thomas Black
Email: thomas@blackkatz.com
Tel: 020 7328 5000**

**Admin: Erika Szabo
Email: Erika@blackkatz.com**

**Office Hours:
Mon-Fri 9.00am-7.00pm
Sat-10am-2.00pm
(Please call beforehand)**

We aim to make our particulars both accurate and reliable. However they are not guaranteed, nor do they form part of an offer or contract. If you require clarification on any points then please contact us. Please note that appliances and heating systems have not been tested and therefore no warranties can be given as to their good working order.