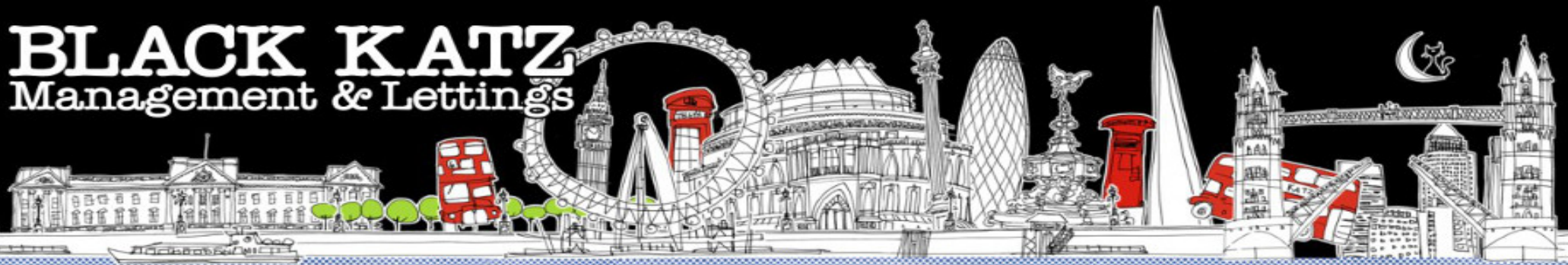


# BLACK KATZ

Management & Lettings



**3 Bedroom Apartment Rent In Borough £ 775 p.w. (£3358 pcm)**

### **3 Bedroom Apartment Rent In Borough £ 775 p.w. (£3358 pcm)**

**Available 13th July**

Located on the ground floor of this highly desirable development on the borders of Borough and London Bridge. This beautiful three double bed roomed, two bathroomed apartment has the added benefit of a charming patio garden and boasts 1066 square feet of living and entertaining space. Boasting a charming interior and ample entertaining space, this wonderful bright and airy three double bedroom offers very well proportioned rooms, neutral decor throughout, spacious separate modern kitchen and separate large reception room.

For transport Borough (Northern line) and London Bridge (Jubilee line, Northern line and overground) are moments away.

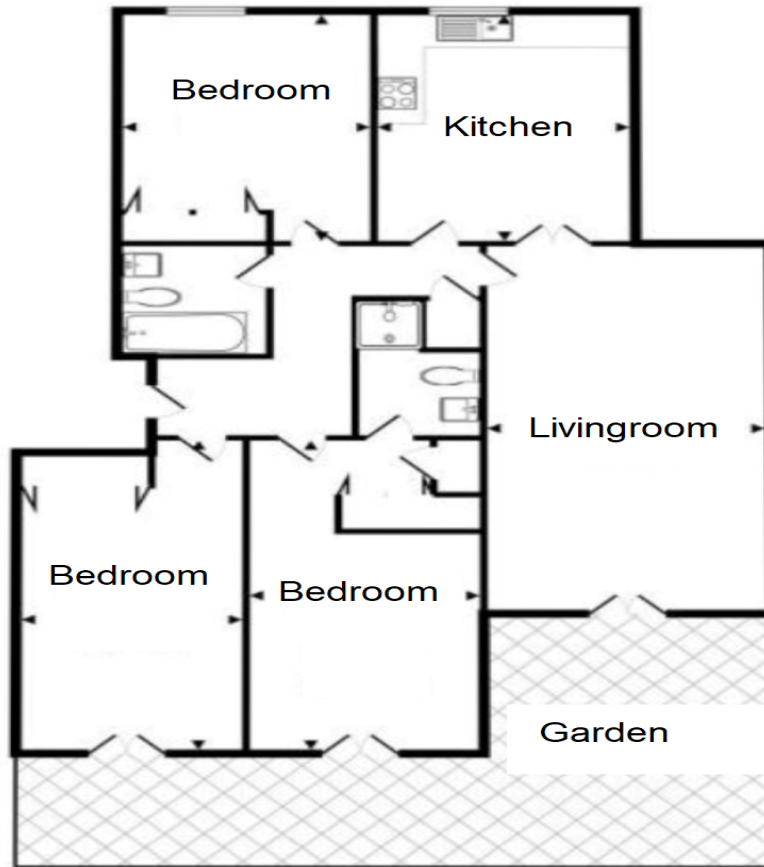
**E.P.C. RATING: D**

#### **Property Features**

. Beautiful tree lined street . Patio garden . Wood Floors . Dishwasher . Separate kitchen . Close to local amenities . Close to Tube . Fantastic Transport Links . Zone 1 . 5 weeks deposit . Private Development . Double Glazed . Excellent decorative order . Spacious Living Room



**3 Bedroom Apartment Rent In Borough £ 775 p.w. (£3358 pcm)**



### 3 Bedroom Apartment Rent In Borough £ 775 p.w. (£3358 pcm)



**78 Borough High Street  
London Bridge  
SE1 1LL**

**Manager: Alex Nunzi  
Email: south@blackkatz.com  
Tel: 020 7403 5010**

**Admin: Amy Burbridge  
Email: amy.burbridge@blackkatz.com**

**Office Hours:  
Mon-Fri 9.00am-7.00pm  
Sat-10am-2.00pm  
(Please call beforehand)**

We aim to make our particulars both accurate and reliable. However they are not guaranteed, nor do they form part of an offer or contract. If you require clarification on any points then please contact us. Please note that appliances and heating systems have not been tested and therefore no warranties can be given as to their good working order.