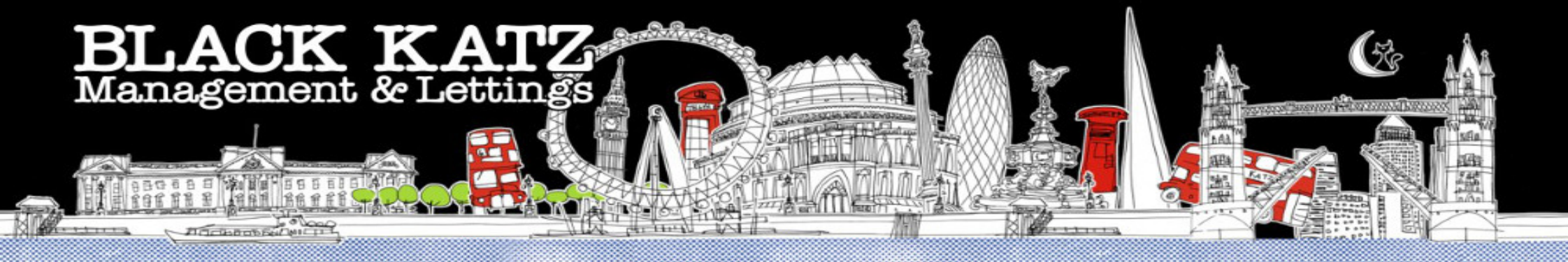


BLACK KATZ

Management & Lettings



3 Bedroom Flat To Rent In ISLINGTON £650 pw (£2816 pcm)

3 Bedroom Flat To Rent In ISLINGTON£ 650 pw (£2816 pcm)

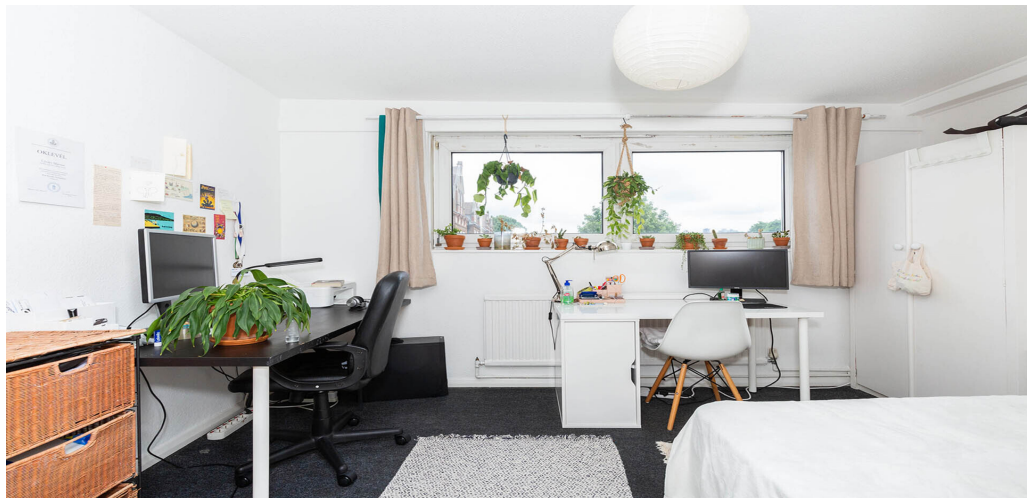
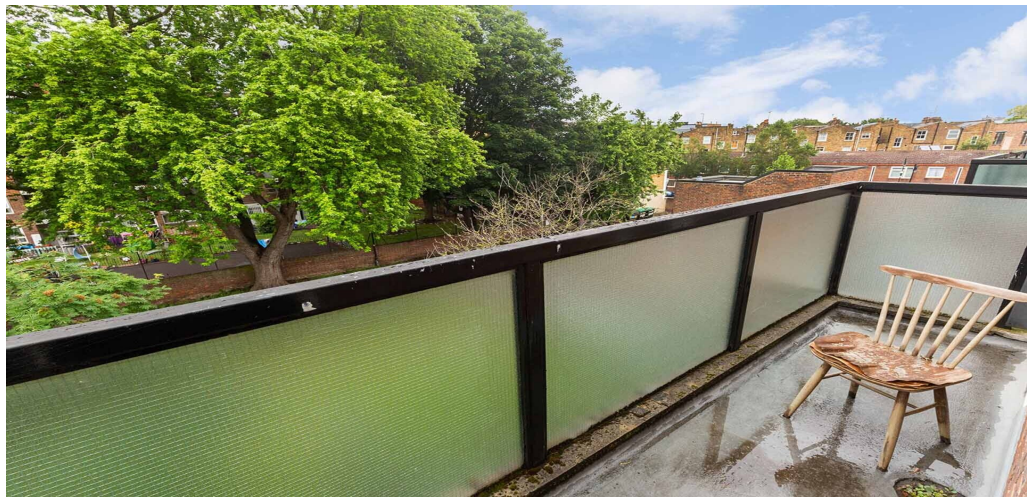
A very well kept two double bedroom flat in the heart of Islington minutes to Upper Street and Essex Road. The property is split over the second and third floors of a purpose built block which comprises of neutral decor throughout, large lounge that can be used as the third bedroom a further two double bedrooms, separate kitchen diner, tiled bathroom and access to a private balcony.

Lindsey Mews is a beautiful residential street just off Essex road moments away from upper street, giving you easy access to the night life with an abundance of bars to choose from. You have easy access to a number of station such as Essex road, Dalston junction, Highbury and Islington.

E.P.C. RATING: C

Property Features

. Balcony . Carpets throughout . Washing Machine . Fitted Kitchen . Separate kitchen . Close to local amenities . Close to Tube . Fantastic Transport Links . Zone 2 . 5 weeks deposit . Tiled bathroom . Arranged over two floors . Small Ex- local authority block . Purpose built development . Managed by Black Katz for your peace of mind . Gas Central Heating . Double Glazed . Good decorative order . Spacious Living Room



3 Bedroom Flat To Rent In ISLINGTON £ 650 pw (£2816 pcm)



**22 Baron Street
London
N1 9ES**

**Manager: Raj Manandhar
Email: raj@blackkatz.com
Tel: 020 7713 7337**

**Admin: Alisha Kaur Sangha
Email: Alisha@blackkatz.com**

**Office Hours:
Mon-Fri 9.00am-7.00pm
Sat-10am-2.00pm
(Please call beforehand)**

We aim to make our particulars both accurate and reliable. However they are not guaranteed, nor do they form part of an offer or contract. If you require clarification on any points then please contact us. Please note that appliances and heating systems have not been tested and therefore no warranties can be given as to their good working order.