

BLACK KATZ

Management & Lettings



4 Bedroom Flat To Rent In Tufnell Park £695pw (£3011 pcm)

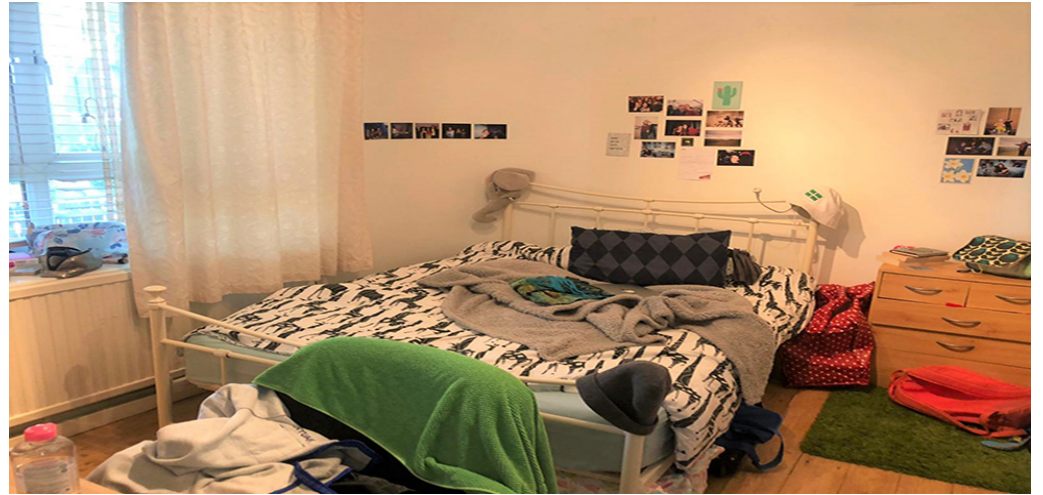
4 Bedroom Flat To Rent In Tufnell Park£ 695pw (£3011 pcm)

<p>Spacious four double bedroom flat set over two floors on a leafy street moments from Tufnell Park Tube. With easy access to Camden Town this property has a large lounge, wood floors, neutral decor, modern fully fitted kitchen and ample storage space.</p><p>Dalmeny Avenue is a lovely quiet location, ideally situated for local shops and within a mile of Tufnell Park station (Northern line), Kentish Town (Thameslink) and Caledonian Road (Piccadilly line).</p>

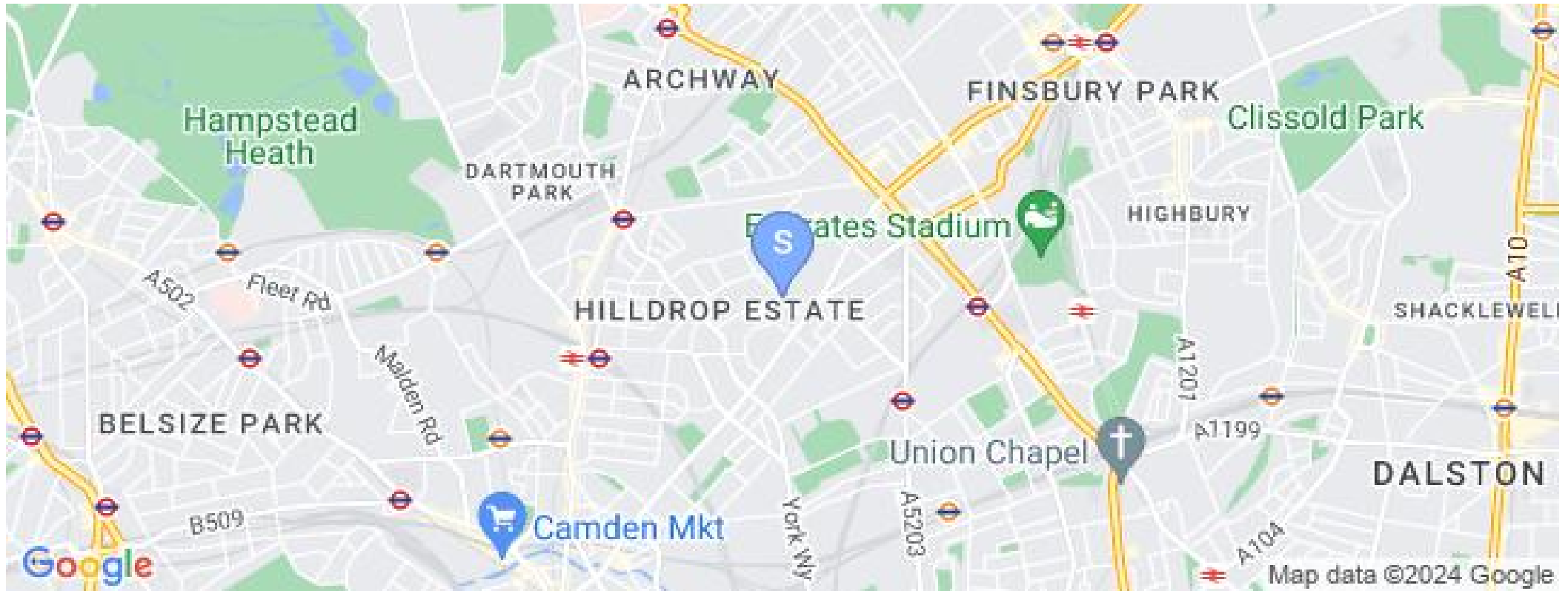
E.P.C. RATING: C

Property Features

. Beautiful tree lined street . Combination of wooden floors and carpets . Washing Machine . Fitted Kitchen . Separate kitchen . Close to local amenities . Close to Tube . Fantastic Transport Links . Zone 2 . 5 weeks deposit . Tiled bathroom . Central Heating . Excellent decorative order



4 Bedroom Flat To Rent In Tufnell Park £ 695pw (£3011 pcm)



**69 Parkway
Camden Town
London
NW1 7PP**

**Manager: Dani Anwar
Email: dani@blackkatz.com
Tel: 020 7284 3111**

**Admin: Lauren Dean
Email: lauren@blackkatz.com**

**Office Hours:
Mon-Fri 9.00am-7.00pm
Sat-10am-2.00pm
(Please call beforehand)**

We aim to make our particulars both accurate and reliable. However they are not guaranteed, nor do they form part of an offer or contract. If you require clarification on any points then please contact us. Please note that appliances and heating systems have not been tested and therefore no warranties can be given as to their good working order.