

BLACK KATZ

Management & Lettings



Studio Apartment To Rent In Hampstead Heath £323pw (£1400 pcm)

Studio Apartment Apartment To Rent In Hampstead Heath£ 323pw (£1400 pcm)

<p>We are happy to present this newly refurbished ground floor studio apartment with access to a shared garden located in the Hampstead / Belsize Park area. The apartment benefits from modern fixtures and fittings, neutral décor and high ceilings throughout. Roderick Road is a lovely tree lined residential road located at the foot of Hampstead Heath and a short walk away from public transport and all local amenities.</p>

E.P.C. RATING: C

Property Features

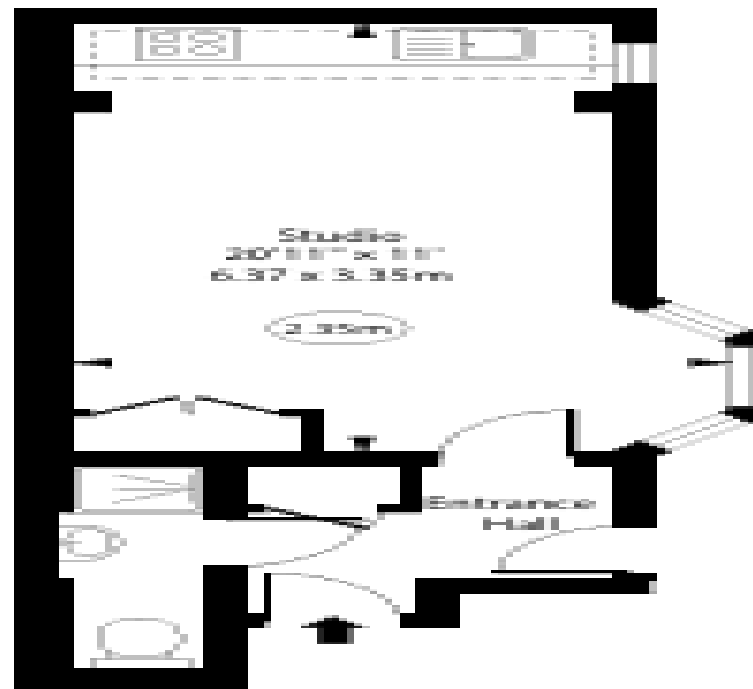
. Beautiful tree lined street . Communal Gardens . Wood Floors . Fitted Kitchen . Close to local amenities . Close to Tube . Fantastic Transport Links . Zone 2 . 5 weeks deposit . Period Conversion . Victorian conversion . Excellent decorative order



Studio Apartment Apartment To Rent In Hampstead Heath £ 323pw (£1400 pcm)

Roderick Road, NW3

 - Ceiling Height

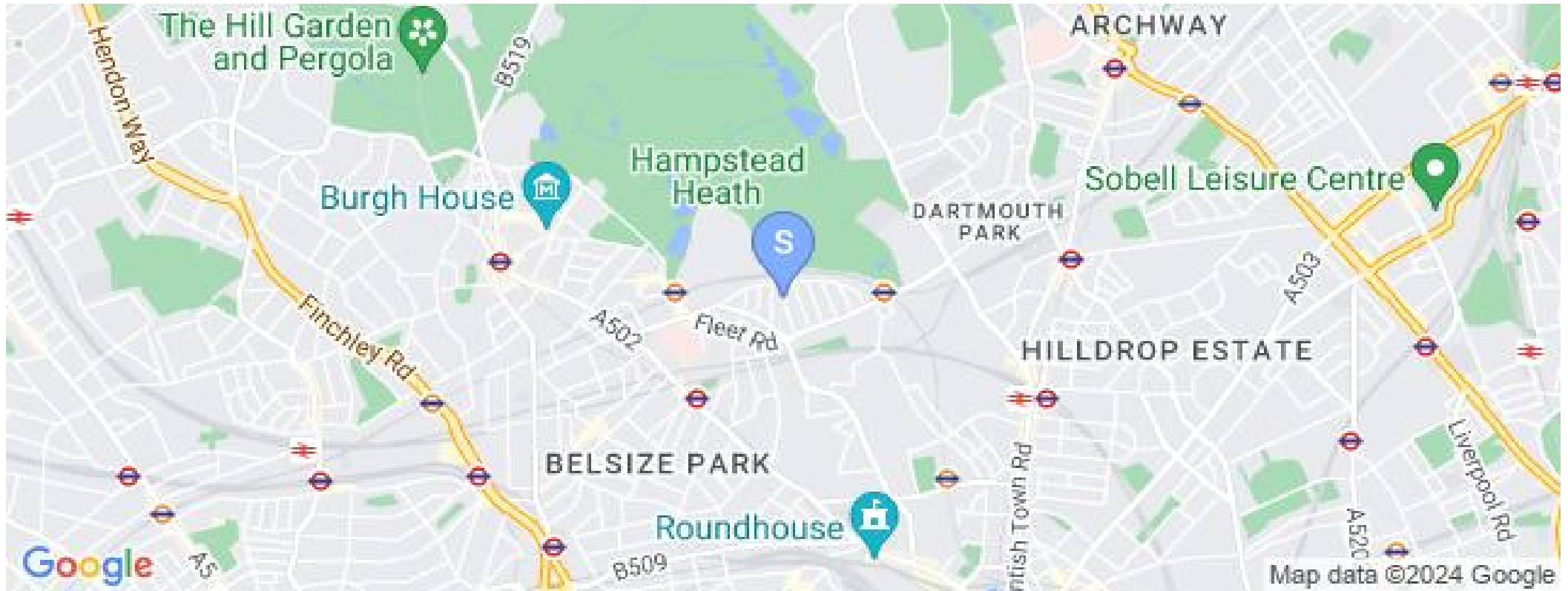


Ground Floor

Approx. Gross Internal Area 275 Sq Ft - 25.55 Sq M

For Illustration Purposes Only - Not To Scale
www.goldlens.co.uk
Ref. No. 019717R

Studio Apartment Apartment To Rent In Hampstead Heath £ 323pw (£1400 pcm)



**22 West Hampstead
Mews
West Hampstead
London
NW6 3BB**

**Manager: Thomas Black
Email: thomas@blackkatz.com
Tel: 020 7328 5000**

**Admin: Erika Szabo
Email: Erika@blackkatz.com**

**Office Hours:
Mon-Fri 9.00am-7.00pm
Sat-10am-2.00pm
(Please call beforehand)**

We aim to make our particulars both accurate and reliable. However they are not guaranteed, nor do they form part of an offer or contract. If you require clarification on any points then please contact us. Please note that appliances and heating systems have not been tested and therefore no warranties can be given as to their good working order.