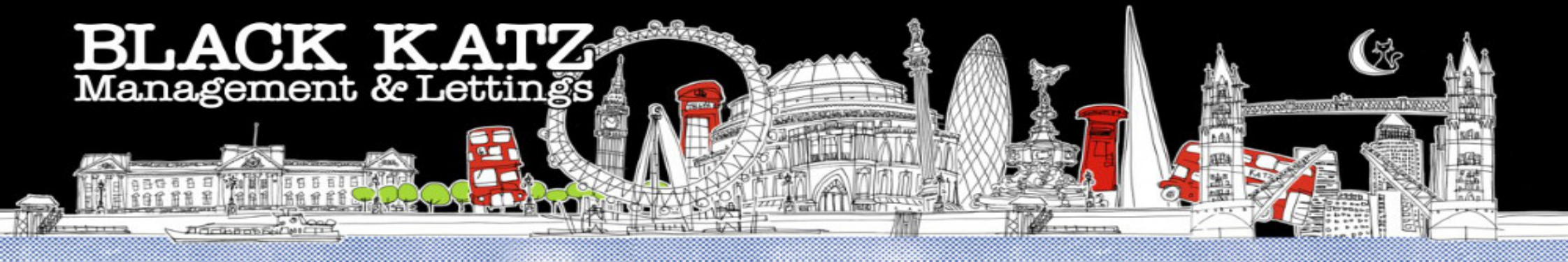


BLACK KATZ

Management & Lettings



Studio Apartment Flat To Rent In Regents Park / Marylebone £385pw (£1668 pcm)

Studio Apartment Flat To Rent In Regents Park / Marylebone£ 385pw (£1668 pcm)

<p>A lovely studio flat in the heart of Regents Park, the property has been done to a good standard with wooden floors throughout and benefits from a modern kitchen and bathroom. Situated on the first floor of a well maintained purpose built block which is minutes away from the lovely Regents Park, Primrose Hill and walking distance to the vibrant Camden Market. Great transport links into the West End and City.</p>

E.P.C. RATING: D

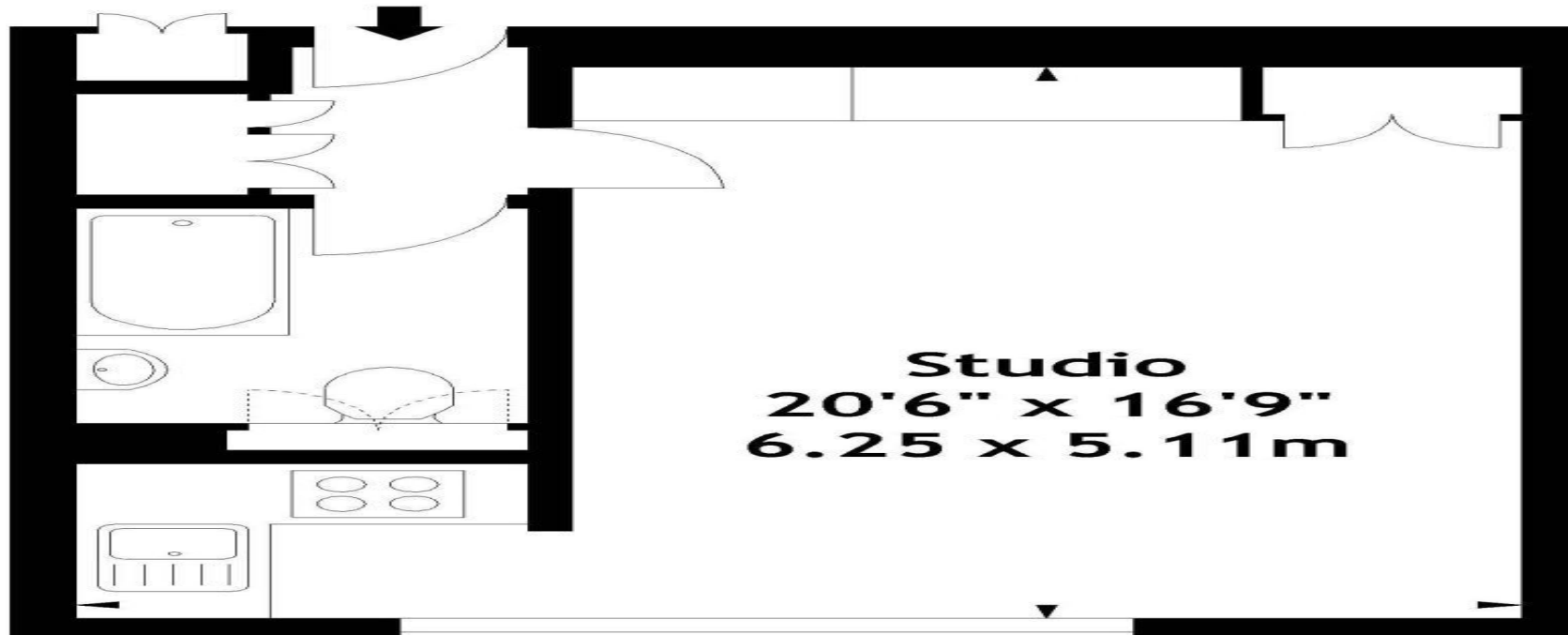
Property Features

. Beautiful tree lined street . Wooden floors throughout . Washing Machine . Fitted Kitchen . Close to local amenities . Close to Tube . Fantastic Transport Links . Zone 1 . 5 weeks deposit . Separate WC . 24 hour Concierge . Central Heating . Good decorative order . Period features . High ceilings



Studio Apartment Flat To Rent In Regents Park / Marylebone £ 385pw (£1668 pcm)

Cumberland Terrace Mews, NW1
Approx. Gross Internal Area
343 Sq Ft - 31.86 Sq M



First Floor

Studio Apartment Flat To Rent In Regents Park / Marylebone £ 385pw (£1668 pcm)



**69 Parkway
Camden Town
London
NW1 7PP**

**Manager: Dani Anwar
Email: dani@blackkatz.com
Tel: 020 7284 3111**

**Admin: Lauren Dean
Email: lauren@blackkatz.com**

**Office Hours:
Mon-Fri 9.00am-7.00pm
Sat-10am-2.00pm
(Please call beforehand)**

We aim to make our particulars both accurate and reliable. However they are not guaranteed, nor do they form part of an offer or contract. If you require clarification on any points then please contact us. Please note that appliances and heating systems have not been tested and therefore no warranties can be given as to their good working order.