

BLACK KATZ

Management & Lettings



Studio Apartment Studio Rent In BELSIZE PARK / CHALK FARM £ 385pw (£1668 pcm)

Studio Apartment Studio Rent In BELSIZE PARK / CHALK FARM£ 385pw (£1668 pcm)

<p>Set within an imposing red brick mansion block (with porter), this fabulous ground floor studio flat offers a superb location moments from Primrose Hill and provides spacious and well-presented accommodation. The property also benefits from a separate kitchen and a large studio room. Boasting a fantastic and quiet location,</p><p>Eton College Road is well placed with the fashionable open expanses of Primrose Hill within easy reach and the extensive shops, cafes, bars and Stables Market of Chalk Farm Road nearby.</p>

E.P.C. RATING: D

Property Features

. Beautiful tree lined street . Washing Machine . Close to local amenities . Close to Tube . Fantastic Transport Links . Zone 2 . Includes Heating and Hotwater . 24 hour Concierge . Private mansion block . Central Heating

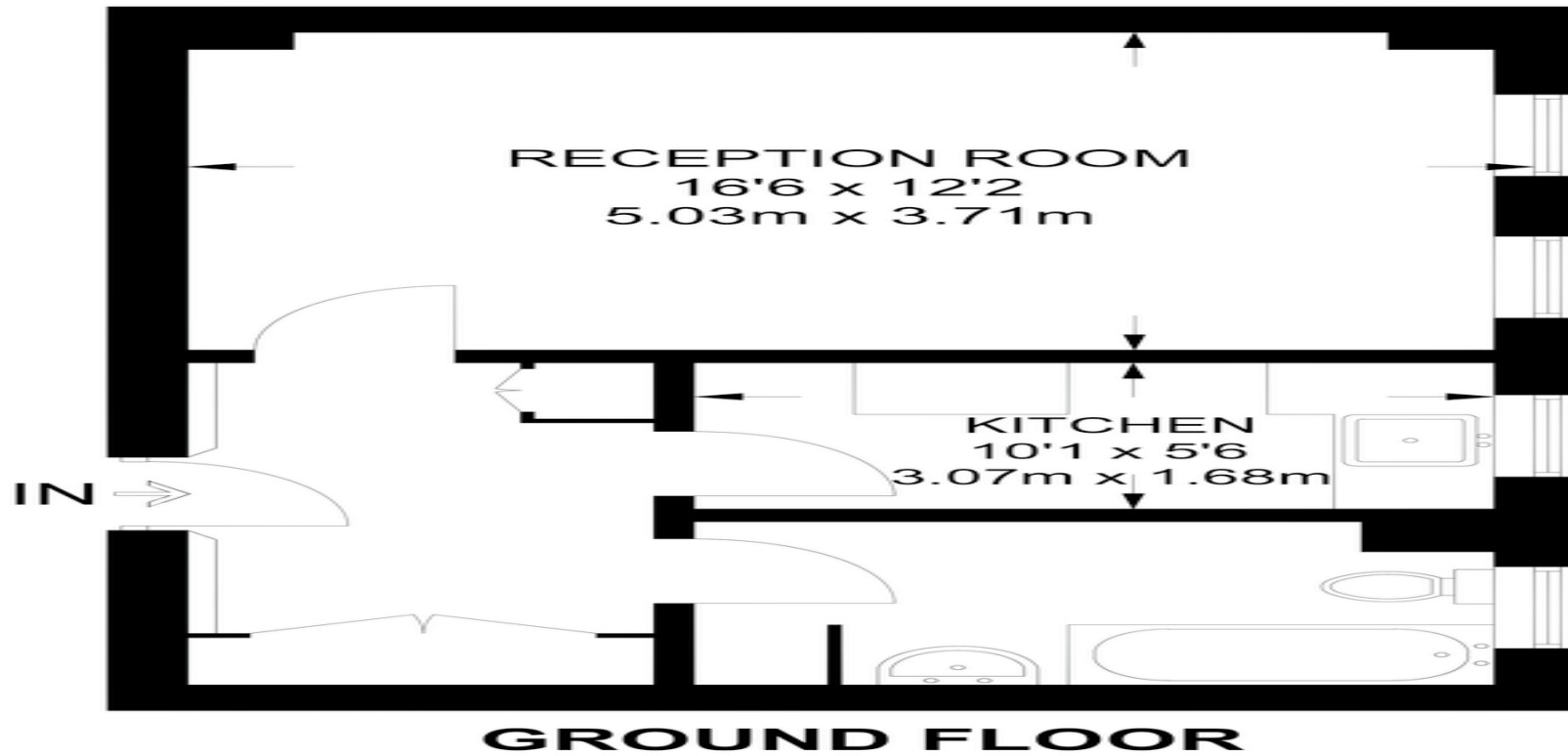
Place of Interest Locally

London Business School - 1.3 miles. Royal College Of Physicians - 1.41 miles. The Place - 1.69 miles. King's Cross station - 1.72 miles. City of Westminster College - 1.81 miles. Highgate School - 1.86 miles. Institute of Education - 1.94 miles. Birkbeck, University of London - 1.94 miles. Hult International Business School - 2.12 miles. Marble Arch Tube Station - 2.17 miles. Pineapple Dance Studios - 2.55 miles. City University London - 2.6 miles. Royal College of Surgeons - 2.68 miles. London School of Business and Finance - 2.7 miles. Gresham College - 2.75 miles.



Studio Apartment Studio Rent In BELSIZE PARK / CHALK FARM £ 385pw (£1668 pcm)

APPROXIMATE FLOOR AREA = 408 SQ FT / 37.9 SQ M
INCLUDING LIMITED USE AREA (6 SQ FT / 0.6 SQ M)



Studio Apartment Studio Rent In BELSIZE PARK / CHALK FARM £ 385pw (£1668 pcm)



Blackkatz
69 Parkway
Camden Town
London
NW1 7PP

Manager: Zia Anwar
Email: zia@blackkatz.com
Tel: 020 7284 3111

Admin: Lauren Dean
Email: lauren@blackkatz.com

Office Hours:
Mon-Fri 9.00am-7.00pm
Sat-10am-2.00pm
(Please call beforehand)

We aim to make our particulars both accurate and reliable. However they are not guaranteed, nor do they form part of an offer or contract. If you require clarification on any points then please contact us. Please note that appliances and heating systems have not been tested and therefore no warranties can be given as to their good working order.