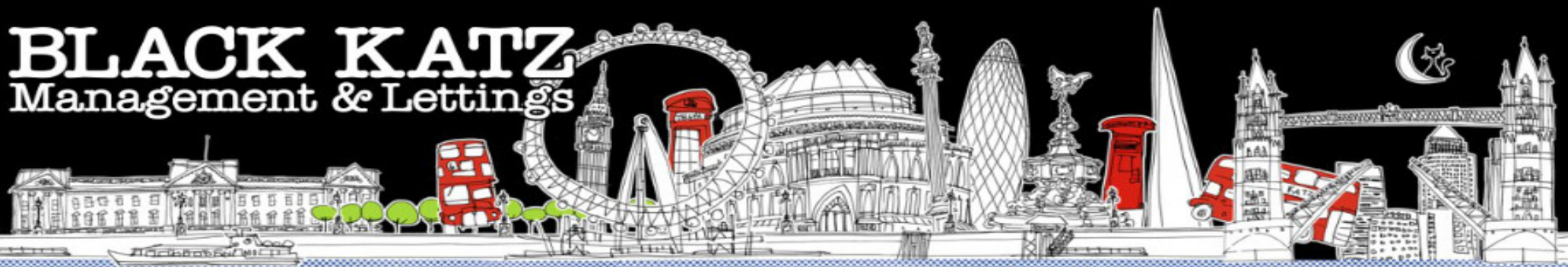


BLACK KATZ

Management & Lettings



Studio Apartment To Rent In Crouch End / Hornsey £346pw (£1500 pcm)

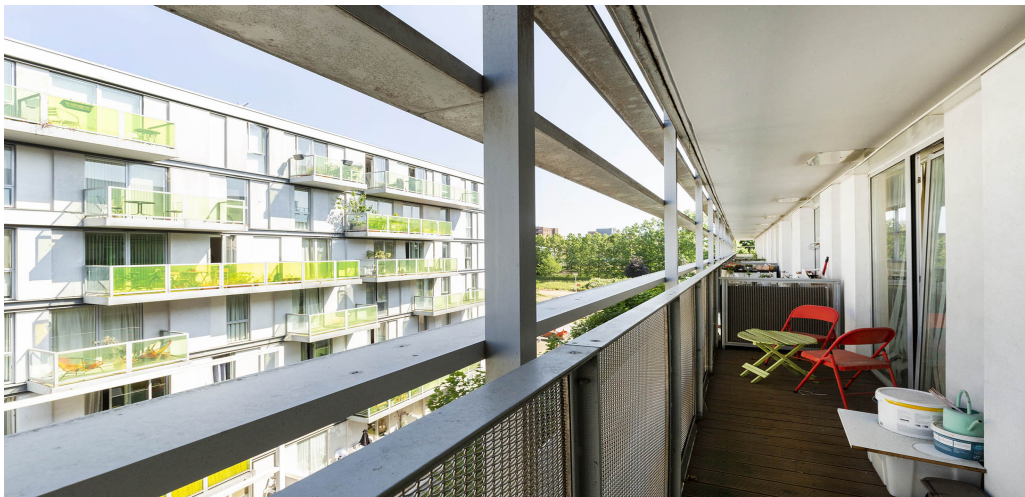
Studio Apartment Studio To Rent In Crouch End / Hornsey£ 346pw (£1500 pcm)

<p>A large studio located within a modern development with access to a gym, sauna and communal roof Terrace The property offers a spacious open plan living area, the kitchen is modern with fitted appliances, floor to ceiling windows and a private balcony. There is an added benefit of the rent being inclusive of Council Tax and Water rates.</p><p>Also you can enjoy the view of Alexandra palace by using the shared roof terrace on top of the building ! A few minute walk to Hornsey overground train station and 8 mins walk to Turnpike Lane tube station (Piccadilly Line).</p>

E.P.C. RATING: B

Property Features

. Balcony . Off Street Parking . Fitted Kitchen . Close to local amenities . Fantastic Transport Links . Zone 2 . 5 weeks deposit . Residents Gym . Tiled bathroom . Open plan . 24 hour Concierge . Private Development . Double Glazed . Spacious Living Room . Floor to ceiling windows



Studio Apartment Studio To Rent In Crouch End / Hornsey £ 346pw (£1500 pcm)



22 Baron Street
London
N1 9ES

Manager: Raj Manandhar
Email: raj@blackkatz.com
Tel: 020 7 713 7337

Admin: Alisha Kaur Sangha
Email: Alisha@blackkatz.com

Office Hours:
Mon-Fri 9.00am-7.00pm
Sat-10am-2.00pm
(Please call beforehand)

We aim to make our particulars both accurate and reliable. However they are not guaranteed, nor do they form part of an offer or contract. If you require clarification on any points then please contact us. Please note that appliances and heating systems have not been tested and therefore no warranties can be given as to their good working order.